

SANTA CATALINA ISLAND



SANTA CATALINA ISLAND





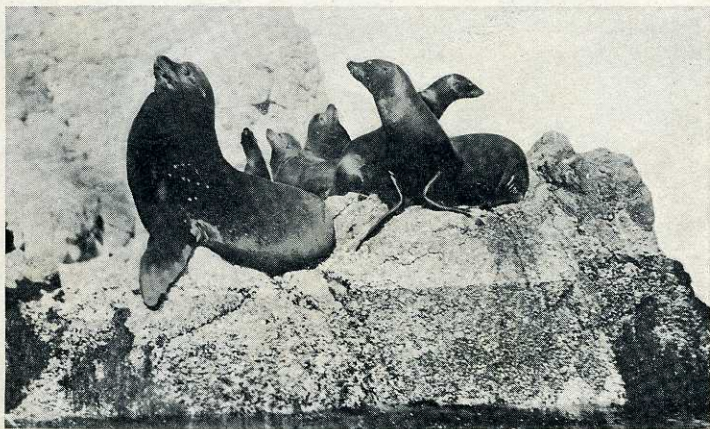
S. S. Cabrillo

SANTA CATALINA ISLAND

Santa Catalina Island is a picturesque mountain range twenty-two miles south of San Pedro. It is twenty-two miles long, from one to eight miles wide, and its highest peak (Orizaba) has an elevation of 2200 feet.

In all the world there is no more enchanting spot. The coast line is cut with innumerable bays, each beautiful and picturesque, each with a different background, a constantly changing panorama of calm water, smooth beaches, many-hued rocks, lofty cliffs, green canyons and mountain peaks—a combination of seashore and mountain scenery unequalled in the world.

The Trip Santa Catalina Island is three hours distant from Los Angeles, via Pacific Electric Railway, Southern Pacific Railroad or Salt Lake Route to San Pedro, where direct connection is made with the "Cabrillo" and "Hermosa"—the two large ocean-going steamers of the Wilmington Transportation Company. The "Cabrillo," with a capacity of 950 people, and "Hermosa," capacity 625, provide a daily passenger service that is absolutely safe and comfortable. The two hours' sail across the channel is delightful—intensely interesting, and one long to be remembered.



Sea Lions—Seal Rocks



Promenade, Showing Bath House and Sugar Loaf

Avalon The town of Avalon, situated on the beautiful crescent shore of the bay of the same name, is supplied with hotels—open the year round, and with rates to suit every purse. There are also restaurants, boarding houses, apartments, shops, markets, delicacy stores, and, in fact, every convenience of a city.

Climate Avalon, situated upon the landward side of the island, is protected from ocean winds by the island mountain range. It is remarkably free from fog; frost is almost unknown. The summers are cool and rainless, an endless succession of bright, beautiful days—never too hot nor too cool. During winter the air is soft and delightful, the climate during this season of the year surpassing that of any other part of the world.

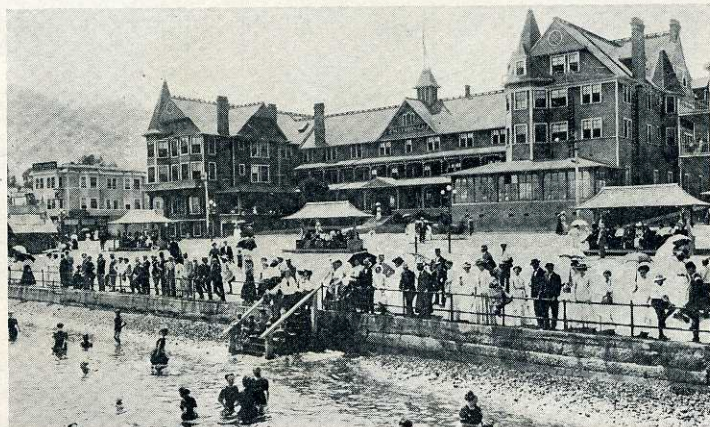
Submarine Gardens

Probably the best known of Santa Catalina's many unique attractions, and one which no visitor to the island should miss, is the view of the beautiful submarine gardens through glass-bottomed boats. These wonderful submarine gardens have been eloquently described as follows:

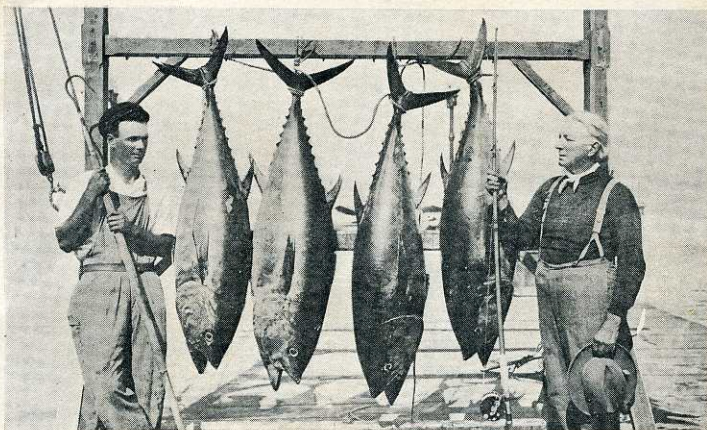
"Floating over the green and blue water in the glass-bottom boat, one sees the goings and comings of aquatic life. Here are shell-encrusted rocks, fishes, red, green, gold, zig-zagging leisurely among the waving foliage; here are real trees with long branches, waving as on land by a tempest; great fish of all shapes, luxuriant foliage, with branches bearing clusters of fruit resembling olives. Leaning over the transparencies in the bottom of the boats, people go into ecstasies."



Porter's Catalina Island Band



Bathing Scene—Hotel Metropole



Tuna—Half Day Record

Excursions

There are daily excursions by well appointed launches from Avalon to the various points of interest; to the Seal Rocks—home of the sea lions; to Moonstone Beach, where the Santa Catalina moonstones are found; to the Isthmus; to Italian Gardens; to Goat Harbor; to Empire; to Emerald Bay; to San Clemente Island; and to other beautiful and interesting places too numerous to mention.

Coaching

The mountain coach ride is another of Catalina's charming diversions. Over a perfect road in comfortable four-in-hand or six-in-hand coaches operated by Mr. G. A. Greeley, the drive to the Summit, and beyond to Middle Ranch or Eagle's Nest, must be taken in order to realize the wondrous beauty of the constantly changing views of this "mountain drive at sea."



Catalina Wild Goat

Goat Hunting

The sportsman is offered the opportunity of hunting the Catalina wild goat. This sport is followed on horseback. Horses familiar with the country, and reliable guides, may be secured from proprietor of the stage line, who will also secure the necessary permit.

Golf

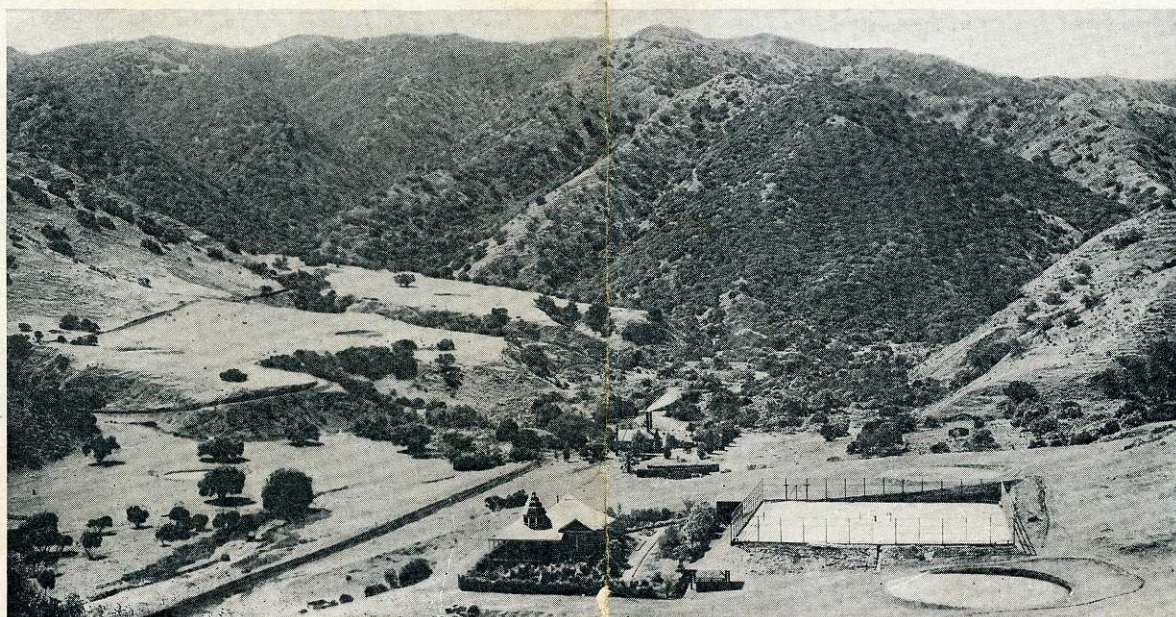
The Catalina Golf Links are pronounced one of the best and most picturesque in America.

Tennis

Adjacent to the club house are well-kept tennis courts for use of visitors to the island.

Bathing

The crystal waters of Catalina afford splendid bathing. A bath house provides every facility for sea bathing, and is also equipped for hot fresh or salt water tub baths.



Golf Links, Tennis Courts and Club House



Coaching Party

Boating The Bay of Avalon is absolutely safe for boating. Its calm waters make it an ideal place for ladies and children, while a short distance out yachtsmen will find the breezes and other conditions all that can be desired.

Game Fish Catalina is world famous for the variety, size and remarkable catches of game fish.

The Leaping Tuna, weighing 80 to 250 pounds, is the hardest fighting fish known and has been caught with rod and reel only in Catalina waters—season, May to October.

The Swordfish, weighing from 100 to 350 pounds, is also a splendid fighter—season, June to December.

The Albicore, smallest of the three varieties of Tuna, weighing 15 to 60 pounds, is taken every month in the year.

The Yellowtail, weighing from 15 to 60 pounds, is one of the gamest fighters known—season, March to December.



A Yellow-Finned Tuna—Gaffing In

The White Sea Bass, weighing from 30 to 70 pounds, comes next as a hard fighter—season, March to November.

The Black Sea Bass, weighing from 100 to 450 pounds, is taken from April to December. Barracuda, Bonita, Rock Bass, Sheephead, Whitefish and many others, all taken with light tackle, afford the fisherman plenty of sport at all times.

Power launches especially constructed and equipped for sea fishing can always be secured at Avalon.

For further information on this interesting subject see Prof. Charles F. Holder's latest book, "The Channel Islands of California."

Ideal Camp Life During summer months, comfortable tent-houses, completely furnished, with every facility for housekeeping, if desired, may be secured at reasonable rates. This ideal way of spending a summer vacation is enjoyed by thousands of representative people every year at Catalina.

Cottages Comfortably furnished cottages may be secured at all times.

Wireless Telegraph on both steamers and at Avalon, affording quick communication with the mainland.

Fares Regular fare from Los Angeles to Avalon and return, \$2.75, good for sixty days.

Week-end excursion tickets, sold Saturday and Sunday, \$2.50, good until Monday. These tickets may be extended to sixty days from date of purchase upon payment of twenty-five cents to purser of the steamer.

Purchase tickets, secure folders and reliable information at the

Santa Catalina Island Ticket Office

104 (Main Entrance) PACIFIC ELECTRIC BUILDING

Los Angeles, Cal., or at Railway Depots

Phones: Sunset Main 4492; Home F-6576